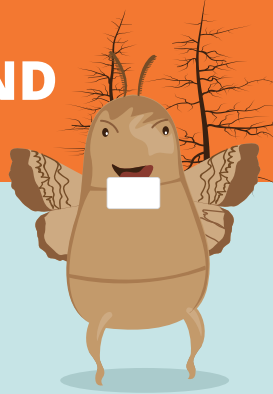


# 13 REASONS TO UNFRIEND THE SPONGY MOTH



## 13 You aren't made of money

Infestations cost millions: expensive control programs, reduced tourism, replacing trees in forests and at home, and restrictions on exports.

## 12 Not a walk in the park

Spongy moths destroy large swaths of national and state parklands.

## 11 Creepy crawlies

Millions of caterpillars can cover trees and your car, house, lawn, playground equipment, and can even fall on you.



## 10 Stowaways

They hitch rides on ships, motor homes, and even patio furniture to relocate to a new home - maybe your home!

## 9 They don't share

Caterpillar feeding reduces food and shelter for other birds and wildlife, including threatened species like the northern spotted owl.

## 8 Overstaying their welcome

Once spongy moth becomes established, as they have in almost half of US states, you can't get them to leave. They stick around **FOREVER**.

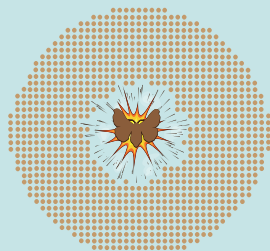


## 7 Freeloaders

Caterpillars feast on your trees and shrubs, without even leaving a thank you note.

## 6 Allergies

Caterpillar hairs can irritate the skin and leave rashes on susceptible adults and children.



## 5 Population explosion

Spongy moths can lay up to 1000 eggs each year, so their population can rapidly explode.

## 4 Stress management

Defoliating trees stresses them out, jeopardizing their health.

## 3 Environmental wrecking balls

The ecological damage left by spongy moth destruction includes: damaged tree canopies, dead trees that fuel forest fires, degraded stream quality, and warmer water temperatures which causes fish decline or death.



## 2 Caterpillar poop

Lots and LOTS of caterpillar poop. In areas with infestations, what sounds like a steady rain outside for several weeks each spring is really thousands of caterpillars eating and dropping pellets of poop - nonstop.



## 1 Tree killers

Evergreen trees, can die from one spongy moth infestation. Even deciduous trees can die from multiple years of caterpillar feeding.

**Learn more at [agr.wa.gov/moths](http://agr.wa.gov/moths)**



Washington  
State Department of  
Agriculture