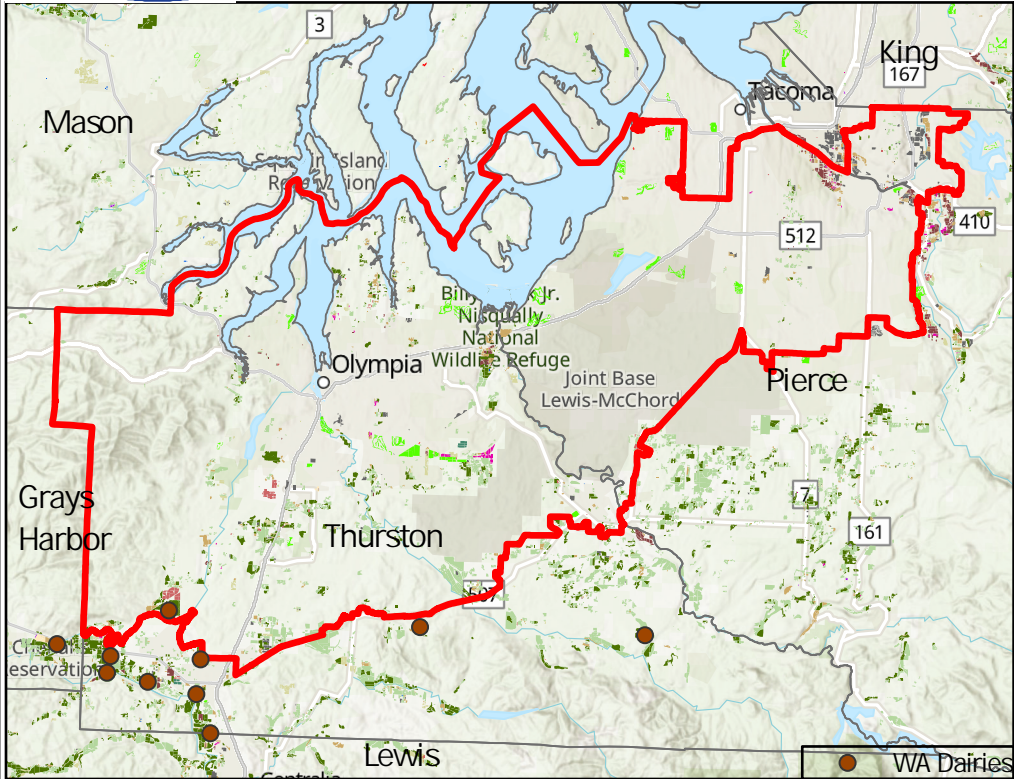




# Agriculture in Congressional District 10

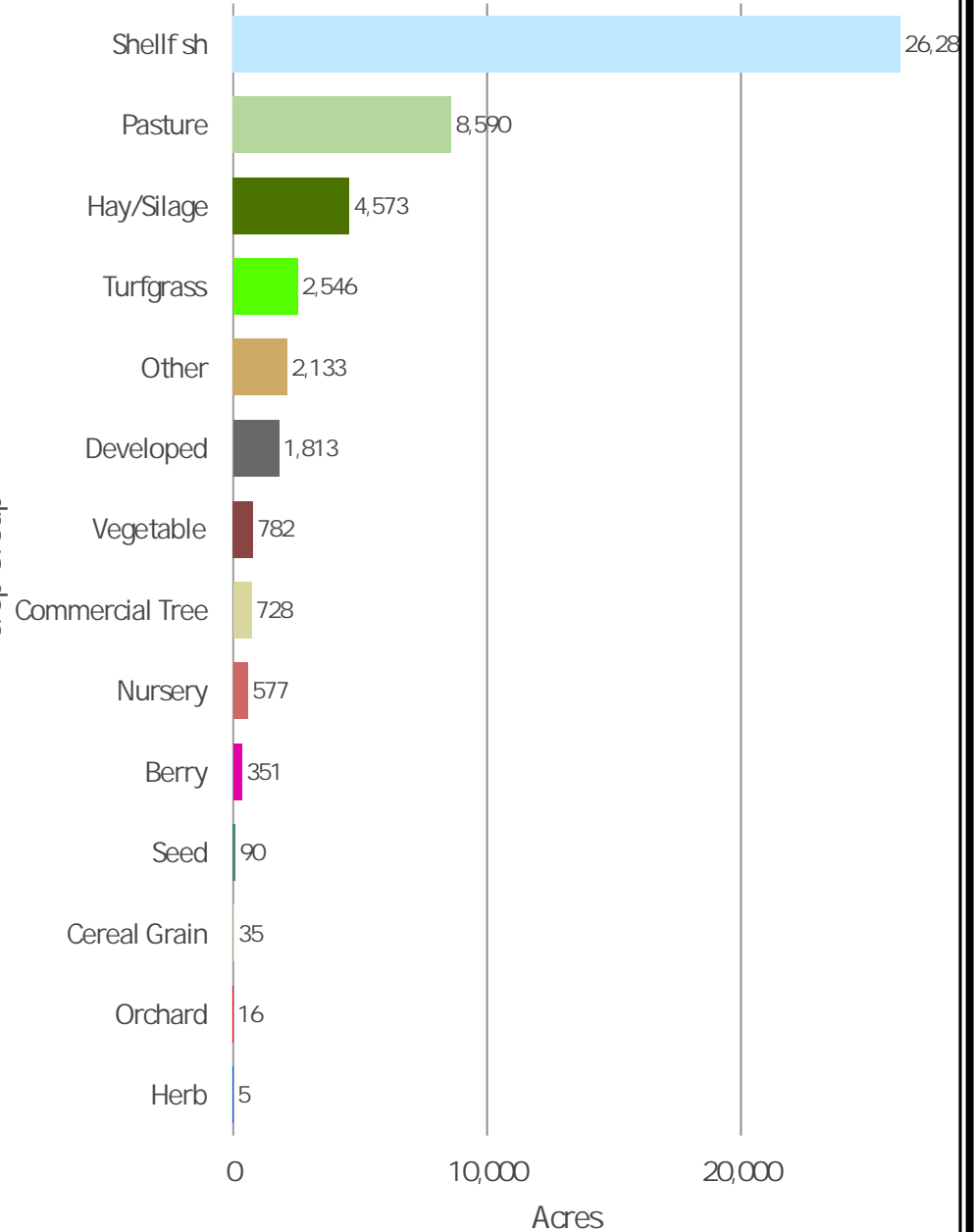
Natural Resources and Agricultural Sciences  
Washington State Department of Agriculture  
Interactive Map URL: <http://arcg.is/1mSiPy>



0 10 20 40 Miles



## Agriculture Breakdown



Disclaimer: This product is provided 'as is' without warranty of any kind, either expressed or implied, including, but not limited to, the implied warranties of merchantability and fitness for a particular use. AGR PUB 102-397. (R/4/24).

Number of Dairies: 2

Total Acres: 48,520