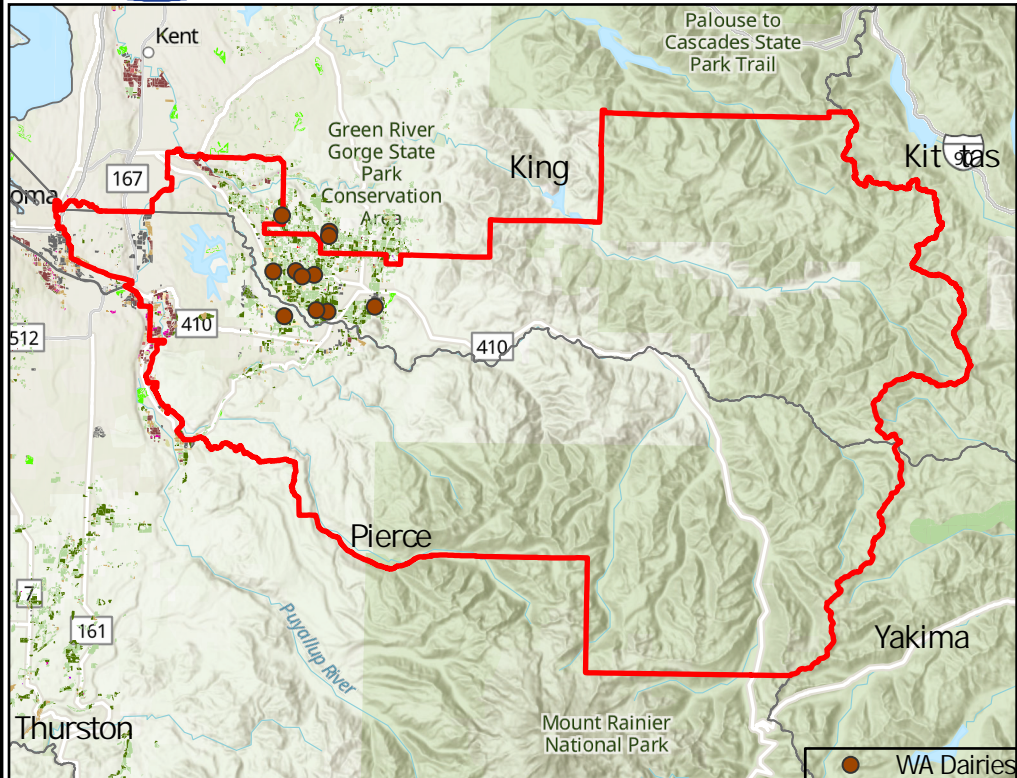




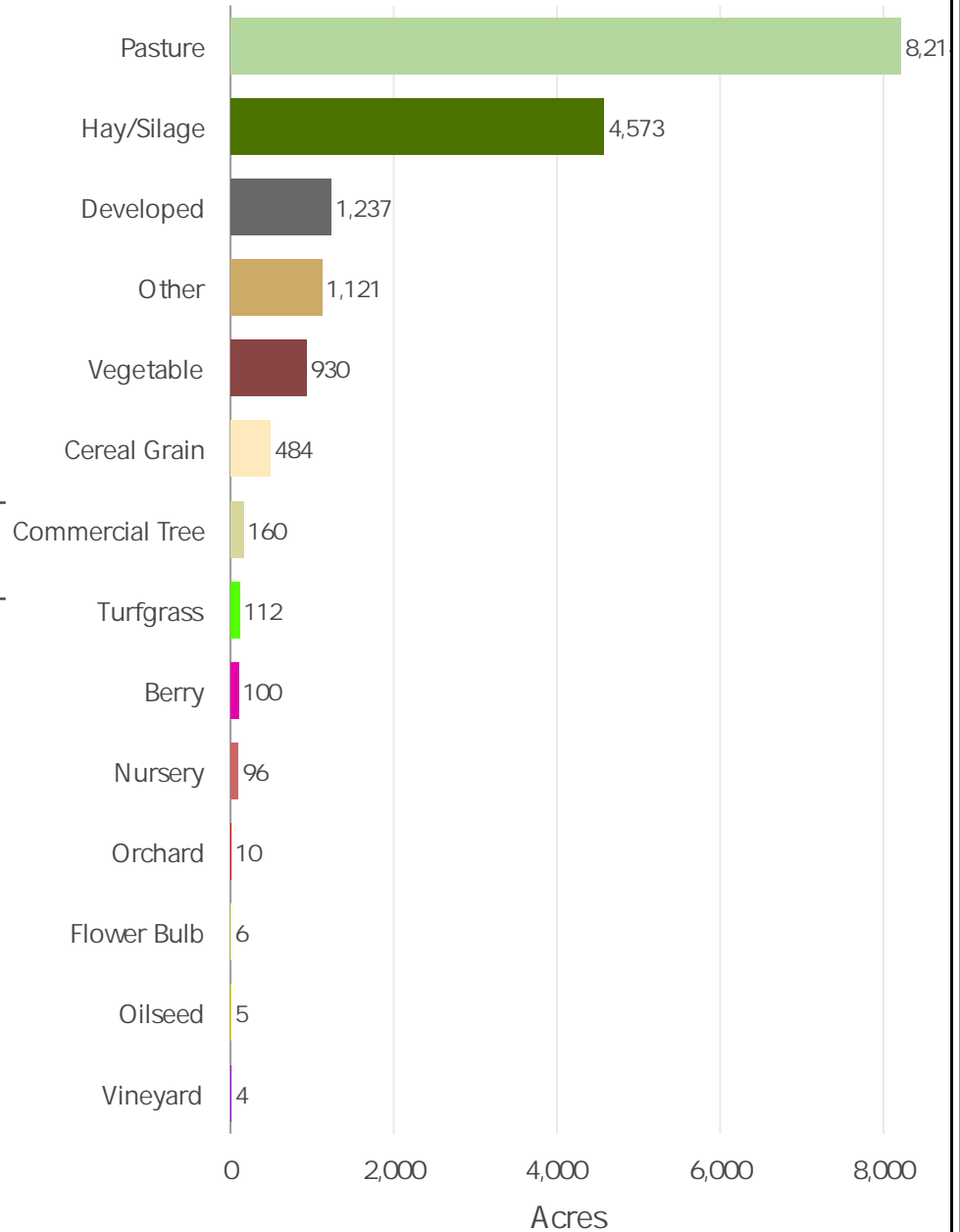
Agriculture in Legislative District 31

Natural Resources and Agricultural Sciences
Washington State Department of Agriculture
Interactive Map URL: <http://arcg.is/1qHT4X>



Crop Group

Agriculture Breakdown



Disclaimer: This product is provided 'as is' without warranty of any kind, either expressed or implied, including, but not limited to, the implied warranties of merchantability and fitness for a particular use. AGR PUB 102-397. (R/4/24).

Number of Dairies: 9

Total Acres: 17,023